

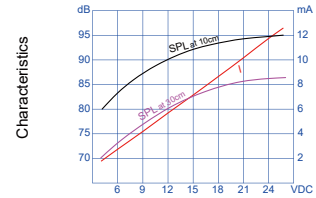
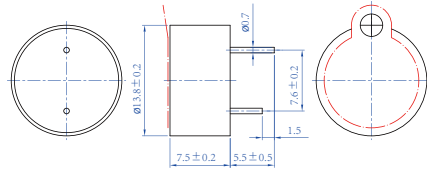
CPB14A



| | | |
|-----------------------|----------------------|---------|
| Part Number | CPB14A12-4.0R | |
| *Rated Voltage | (VDC) | 12 |
| Operating Voltage | (VDC) | 3~15 |
| ◆Rated Current | (mA) | 7 max. |
| ◆Sound Output at 10cm | (dB) | 80 min. |
| Resonant Frequency | (Hz) | 4000 |
| Operating Temperature | (°C) | -40~+85 |
| Storage Temperature | (°C) | -40~+90 |
| Weight | (g) | 0.75 |

*Other Rated Voltage is available ◆Value applying at rated voltage

Dimensions (mm)



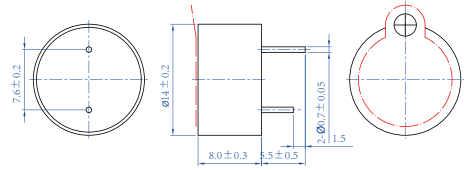
CPB14B



| | | |
|-----------------------|----------------------|---------|
| Part Number | CPB14B09-4.4R | |
| *Rated Voltage | (VDC) | 9 |
| Operating Voltage | (VDC) | 3~16 |
| ◆Rated Current | (mA) | 8 max. |
| ◆Sound Output at 10cm | (dB) | 85 min. |
| Resonant Frequency | (Hz) | 4400 |
| Operating Temperature | (°C) | -40~+85 |
| Storage Temperature | (°C) | -40~+90 |
| Weight | (g) | 0.8 |

*Other Rated Voltage is available ◆Value applying at rated voltage

Dimensions (mm)



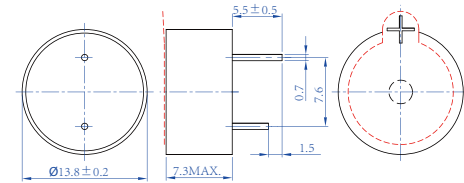
CPB14C



| | | |
|-----------------------|----------------------|---------|
| Part Number | CPB14C12-4.3R | |
| *Rated Voltage | (VDC) | 12 |
| Operating Voltage | (VDC) | 3~16 |
| ◆Rated Current | (mA) | 8 max. |
| ◆Sound Output at 10cm | (dB) | 85 min. |
| Resonant Frequency | (Hz) | 4300 |
| Operating Temperature | (°C) | -40~+85 |
| Storage Temperature | (°C) | -40~+90 |
| Weight | (g) | 0.75 |

*Other Rated Voltage is available ◆Value applying at rated voltage

Dimensions (mm)



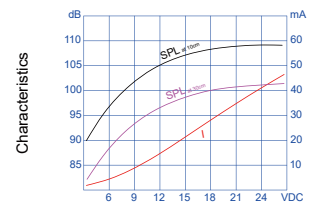
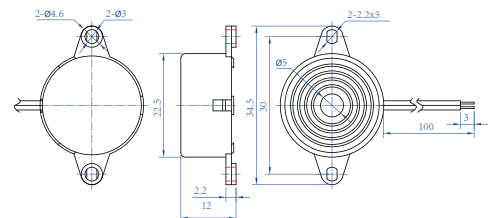
CPB23A



| | | |
|-----------------------|---------------------------|---------|
| Part Number | CPB23A12-3.0-W100R | |
| *Rated Voltage | (VDC) | 12 |
| Operating Voltage | (VDC) | 3~20 |
| ◆Rated Current | (mA) | 20 max. |
| ◆Sound Output at 10cm | (dB) | 90 min. |
| Resonant Frequency | (Hz) | 3000 |
| Operating Temperature | (°C) | -20~+70 |
| Storage Temperature | (°C) | -30~+80 |
| Weight | (g) | 3.4 |

*Other Rated Voltage is available ◆Value applying at rated voltage

Dimensions (mm)



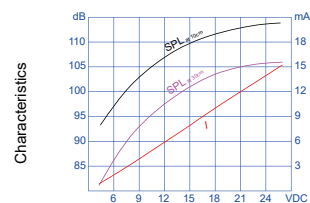
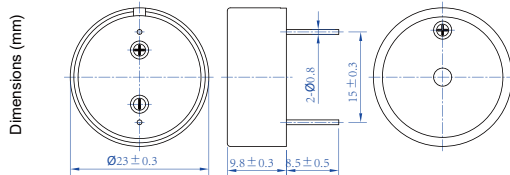
Chinasound Piezo Buzzer

CPB23B



| | | |
|-----------------------|----------------------|---------|
| Part Number | CPB23B12-3.8R | |
| *Rated Voltage | (VDC) | 12 |
| Operating Voltage | (VDC) | 3~20 |
| ◆Rated Current | (mA) | 8 max. |
| ◆Sound Output at 10cm | (dB) | 90 min. |
| Resonant Frequency | (Hz) | 3800 |
| Operating Temperature | (°C) | -30~+85 |
| Storage Temperature | (°C) | -40~+90 |
| Weight | (g) | 3.2 |

*Other Rated Voltage is available ◆Value applying at rated voltage

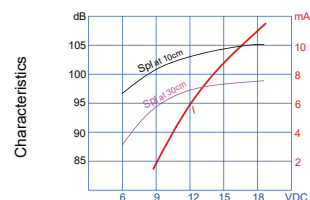
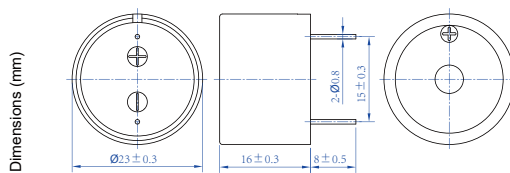


CPB23C



| | | |
|-----------------------|----------------------|---------|
| Part Number | CPB23C12-2.9R | |
| *Rated Voltage | (VDC) | 12 |
| Operating Voltage | (VDC) | 3~20 |
| ◆Rated Current | (mA) | 10 max. |
| ◆Sound Output at 30cm | (dB) | 88 min. |
| Resonant Frequency | (Hz) | 2900 |
| Operating Temperature | (°C) | -40~+85 |
| Storage Temperature | (°C) | -40~+90 |
| Weight | (g) | 3.7 |

*Other Rated Voltage is available ◆Value applying at rated voltage

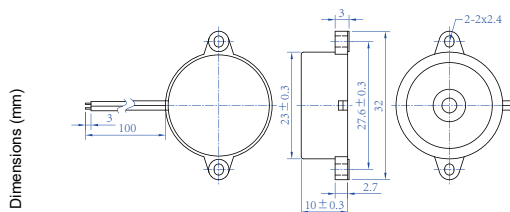


CPB23D



| | | |
|-----------------------|---------------------------|---------|
| Part Number | CPB23D12-3.8-W100R | |
| *Rated Voltage | (VDC) | 12 |
| Operating Voltage | (VDC) | 3~20 |
| ◆Rated Current | (mA) | 10 max. |
| ◆Sound Output at 10cm | (dB) | 90 min. |
| Resonant Frequency | (Hz) | 3800 |
| Operating Temperature | (°C) | -20~+70 |
| Storage Temperature | (°C) | -30~+80 |
| Weight | (g) | 3.8 |

*Other Rated Voltage is available ◆Value applying at rated voltage

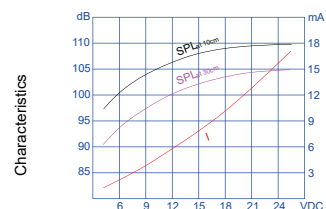
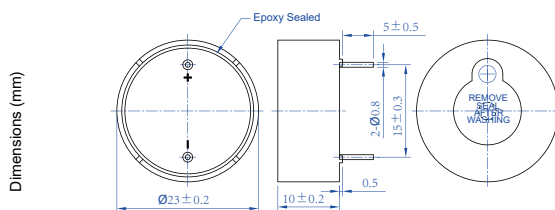


CPB23E



| | | |
|-----------------------|-------------------------|---------|
| Part Number | CPB23E12-H3.2-1R | |
| *Rated Voltage | (VDC) | 12 |
| Operating Voltage | (VDC) | 3~24 |
| ◆Rated Current | (mA) | 8 max. |
| ◆Sound Output at 10cm | (dB) | 95 min. |
| Resonant Frequency | (Hz) | 3200 |
| Operating Temperature | (°C) | -30~+85 |
| Storage Temperature | (°C) | -40~+90 |
| Weight | (g) | 4 |

*Other Rated Voltage is available ◆Value applying at rated voltage



Chinasound Piezo Buzzer

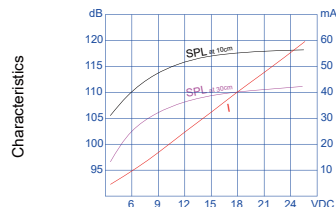
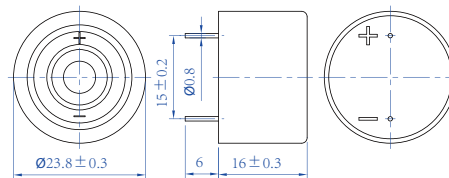
CPB24A



| Part Number | | CPB24A09-H3.2R |
|-----------------------|-------|----------------|
| *Rated Voltage | (VDC) | 9 |
| Operating Voltage | (VDC) | 3~20 |
| ◆Rated Current | (mA) | 35 max. |
| ◆Sound Output at 30cm | (dB) | 95 min. |
| Resonant Frequency | (Hz) | 3200 |
| Operating Temperature | (°C) | -40~+85 |
| Storage Temperature | (°C) | -40~+90 |
| Weight | (g) | 5 |

*Other Rated Voltage is available ◆Value applying at rated voltage

Dimensions (mm)



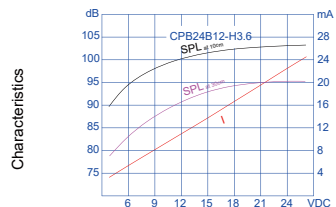
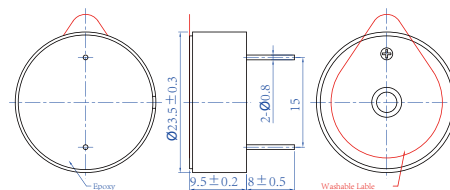
CPB24B



| Part Number | | CPB24B12-H3.6-1R |
|-----------------------|-------|------------------|
| *Rated Voltage | (VDC) | 12 |
| Operating Voltage | (VDC) | 3~20 |
| ◆Rated Current | (mA) | 12 max. |
| ◆Sound Output at 10cm | (dB) | 90 min. |
| Resonant Frequency | (Hz) | 3600 |
| Operating Temperature | (°C) | -40~+85 |
| Storage Temperature | (°C) | -40~+90 |
| Weight | (g) | 5 |

*Other Rated Voltage is available ◆Value applying at rated voltage

Dimensions (mm)



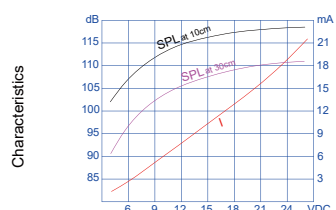
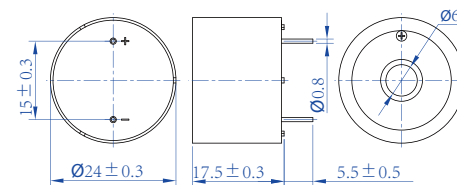
CPB24C



| Part Number | | CPB24C12-H4.0R |
|-----------------------|-------|----------------|
| *Rated Voltage | (VDC) | 12 |
| Operating Voltage | (VDC) | 3~20 |
| ◆Rated Current | (mA) | 12 max. |
| ◆Sound Output at 10cm | (dB) | 95 min. |
| Resonant Frequency | (Hz) | 4000 |
| Operating Temperature | (°C) | -30~+85 |
| Storage Temperature | (°C) | -40~+90 |
| Weight | (g) | 5 |

*Other Rated Voltage is available ◆Value applying at rated voltage

Dimensions (mm)



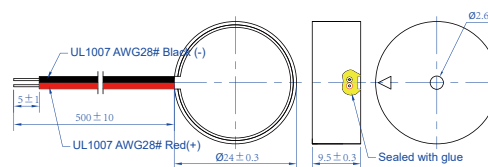
CPB24G



| Part Number | | CPB24GS12-3.2-W500R |
|-----------------------|-------|---------------------|
| *Rated Voltage | (VDC) | 12 |
| Operating Voltage | (VDC) | 3~20 |
| ◆Rated Current | (mA) | 10 max. |
| ◆Sound Output at 10cm | (dB) | 90 min. |
| Resonant Frequency | (Hz) | 3200 |
| Operating Temperature | (°C) | -40~+85 |
| Storage Temperature | (°C) | -40~+90 |
| Weight | (g) | 5.7 |

*Other Rated Voltage is available ◆Value applying at rated voltage

Dimensions (mm)

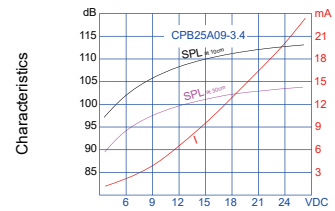
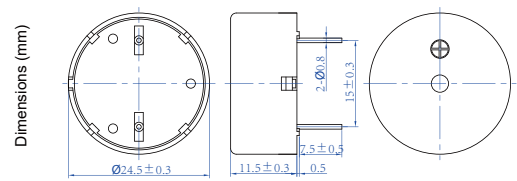


CPB25A



| Part Number | | CPB25A12-H3.4R |
|-----------------------|-------|----------------|
| *Rated Voltage | (VDC) | 12 |
| Operating Voltage | (VDC) | 3~20 |
| ◆Rated Current | (mA) | 8 max. |
| ◆Sound Output at 30cm | (dB) | 95 min. |
| Resonant Frequency | (Hz) | 3400 |
| Operating Temperature | (°C) | -30~+85 |
| Storage Temperature | (°C) | -40~+90 |
| Weight | (g) | 3.9 |

*Other Rated Voltage is available ◆Value applying at rated voltage

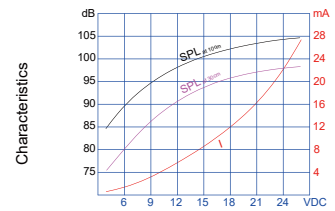
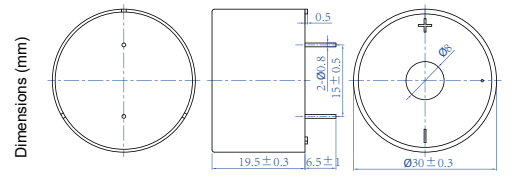


CPB30B



| Part Number | | CPB30B12-H3.6R |
|-----------------------|-------|----------------|
| *Rated Voltage | (VDC) | 12 |
| Operating Voltage | (VDC) | 3~20 |
| ◆Rated Current | (mA) | 10 max. |
| ◆Sound Output at 10cm | (dB) | 95 min. |
| Resonant Frequency | (Hz) | 3600 |
| Operating Temperature | (°C) | -40~+85 |
| Storage Temperature | (°C) | -40~+90 |
| Weight | (g) | 8 |

*Other Rated Voltage is available ◆Value applying at rated voltage

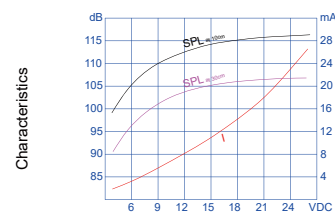
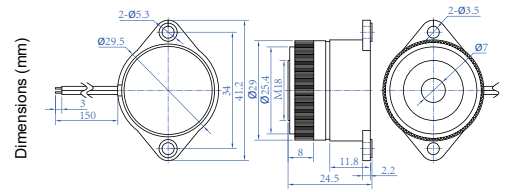


CPB30C



| Part Number | | CPB30C12-3.7-W150R |
|-----------------------|-------|--------------------|
| *Rated Voltage | (VDC) | 12 |
| Operating Voltage | (VDC) | 3~24 |
| ◆Rated Current | (mA) | 18 max. |
| ◆Sound Output at 30cm | (dB) | 90 min. |
| Resonant Frequency | (Hz) | 3700 |
| Operating Temperature | (°C) | -20~+70 |
| Storage Temperature | (°C) | -30~+80 |
| Weight | (g) | 11.8 |

*Other Rated Voltage is available ◆Value applying at rated voltage

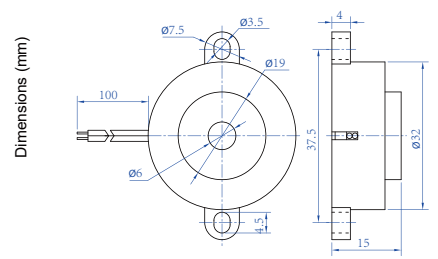


CPB32A



| Part Number | | CPB32A12-4.0-W100R |
|-----------------------|-------|--------------------|
| *Rated Voltage | (VDC) | 12 |
| Operating Voltage | (VDC) | 3~20 |
| ◆Rated Current | (mA) | 10 max. |
| ◆Sound Output at 10cm | (dB) | 95 min. |
| Resonant Frequency | (Hz) | 4000 |
| Operating Temperature | (°C) | -20~+70 |
| Storage Temperature | (°C) | -30~+80 |
| Weight | (g) | 7 |

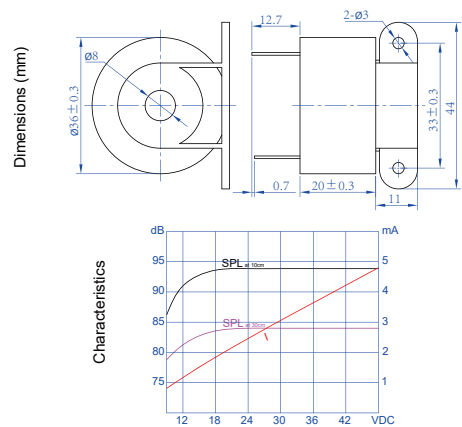
*Other Rated Voltage is available ◆Value applying at rated voltage



CPB36A



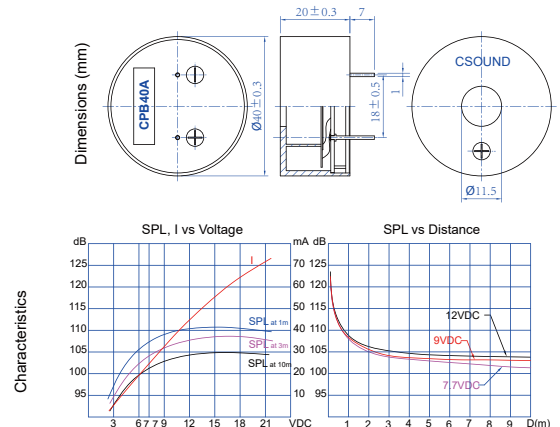
| | | |
|--|----------------------|---------|
| Part Number | CPB36A48-2.8R | |
| *Rated Voltage | (VDC) | 48 |
| Operating Voltage | (VDC) | 9~48 |
| ◆Rated Current | (mA) | 6 max. |
| ◆Sound Output at 30cm | (dB) | 80 min. |
| Resonant Frequency | (Hz) | 2800 |
| Operating Temperature | (°C) | -40~+85 |
| Storage Temperature | (°C) | -40~+90 |
| Weight | (g) | 35 |
| *Other Rated Voltage is available ◆Value applying at rated voltage | | |



CPB40A



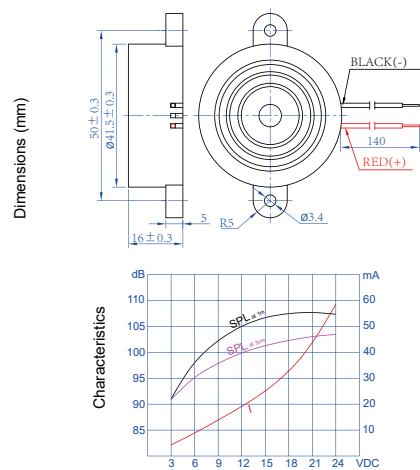
| | | |
|--|----------------------|----------|
| Part Number | CPB40A09-2.8R | |
| *Rated Voltage | (VDC) | 9 |
| Operating Voltage | (VDC) | 3~20 |
| ◆Rated Current | (mA) | 50 max. |
| ◆Sound Output at 100cm | (dB) | 100 min. |
| Resonant Frequency | (Hz) | 2800 |
| Operating Temperature | (°C) | -30~+85 |
| Storage Temperature | (°C) | -40~+90 |
| Weight | (g) | 12.7 |
| *Other Rated Voltage is available ◆Value applying at rated voltage | | |



CPB42A



| | | |
|--|---------------------------|---------|
| Part Number | CPB42A12-2.8-W140R | |
| *Rated Voltage | (VDC) | 12 |
| Operating Voltage | (VDC) | 3~24 |
| ◆Rated Current | (mA) | 15 max. |
| ◆Sound Output at 30 cm | (dB) | 98 min. |
| Resonant Frequency | (Hz) | 2800 |
| Operating Temperature | (°C) | -20~+70 |
| Storage Temperature | (°C) | -30~+80 |
| Weight | (g) | 13 |
| *Other Rated Voltage is available ◆Value applying at rated voltage | | |

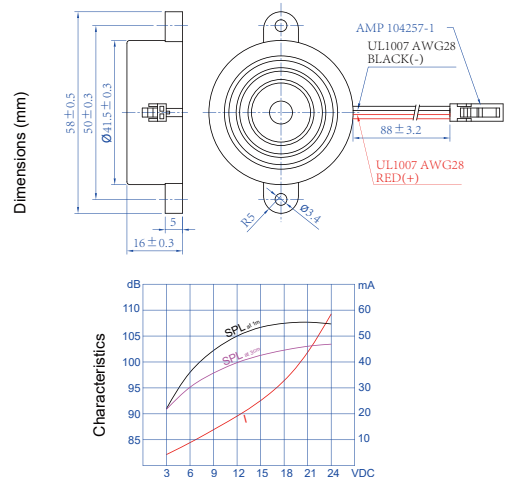


CPB42A-T



Intermittent Tone

| | | |
|--|------------------------------|---------|
| Part Number | CPB42A12-2.9T-C19W88R | |
| *Rated Voltage | (VDC) | 12 |
| Operating Voltage | (VDC) | 3~24 |
| ◆Rated Current | (mA) | 10 max. |
| ◆Sound Output at 30cm | (dB) | 95 min. |
| Resonant Frequency | (Hz) | 2900 |
| Operating Temperature | (°C) | -20~+70 |
| Storage Temperature | (°C) | -30~+80 |
| Weight | (g) | 13 |
| *Other Rated Voltage is available ◆Value applying at rated voltage | | |

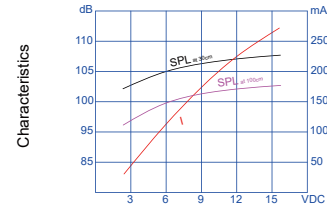
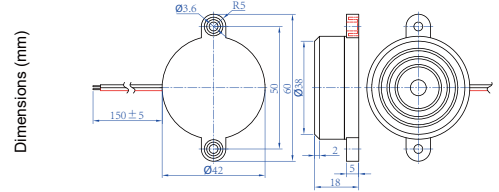


CPB42B-S



| | | |
|-----------------------|----------------------------|----------|
| Part Number | CPB42B09-2.8S-W150R | |
| *Rated Voltage | (VDC) | 9 |
| Operating Voltage | (VDC) | 7~20 |
| ◆Rated Current | (mA) | 200 max. |
| ◆Sound Output at 30cm | (dB) | 100 min. |
| Resonant Frequency | (Hz) | 2800 |
| Operating Temperature | (°C) | -20~+70 |
| Storage Temperature | (°C) | -30~+80 |
| Weight | (g) | 17 |

*Other Rated Voltage is available ◆Value applying at rated voltage

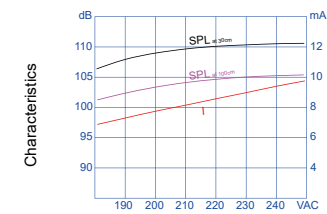
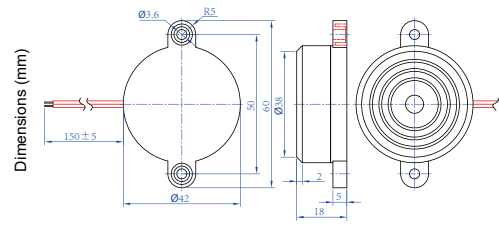


CPB42B220A



| | | |
|-----------------------|-----------------------------|---------|
| Part Number | CPB42B220A-2.8-W150R | |
| *Rated Voltage | (VAC) | 220 |
| Operating Voltage | (VAC) | 50~250 |
| ◆Rated Current | (mA) | 10 max. |
| ◆Sound Output at 30cm | (dB) | 98 min. |
| Resonant Frequency | (Hz) | 2800 |
| Operating Temperature | (°C) | -20~+70 |
| Storage Temperature | (°C) | -30~+80 |
| Weight | (g) | 17 |

*Other Rated Voltage is available ◆Value applying at rated voltage

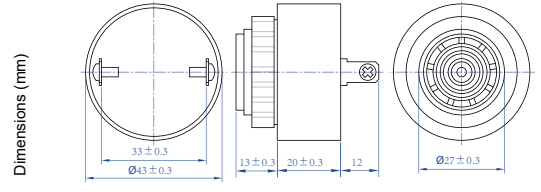


CPB43A



| | | |
|-----------------------|---------------------|---------|
| Part Number | CP43A24-2.9R | |
| *Rated Voltage | (VDC) | 24 |
| Operating Voltage | (VDC) | 7~30 |
| ◆Rated Current | (mA) | 12 max. |
| ◆Sound Output at 30cm | (dB) | 95 min. |
| Resonant Frequency | (Hz) | 2900 |
| Operating Temperature | (°C) | -40~+85 |
| Storage Temperature | (°C) | -40~+90 |
| Weight | (g) | 39 |

*Other Rated Voltage is available ◆Value applying at rated voltage



CPB43B



| | | |
|-----------------------|------------------------|----------|
| Part Number | CPB43B12-2.9CIR | |
| *Rated Voltage | (VDC) | 12 |
| Operating Voltage | (VDC) | 3~28 |
| ◆Rated Current | (mA) | 10 max. |
| ◆Sound Output at 30cm | (dB) | 100 min. |
| Resonant Frequency | (Hz) | 2900 |
| Operating Temperature | (°C) | -40~+85 |
| Storage Temperature | (°C) | -40~+90 |
| Weight | (g) | 39 |

*Other Rated Voltage is available ◆Value applying at rated voltage

