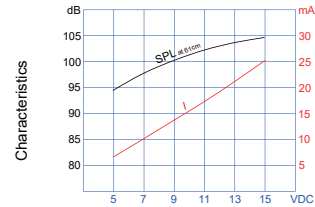
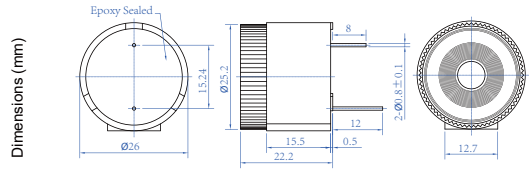


Chinasound Piezo Alarm

CPA26G515CEP



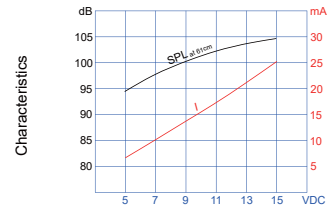
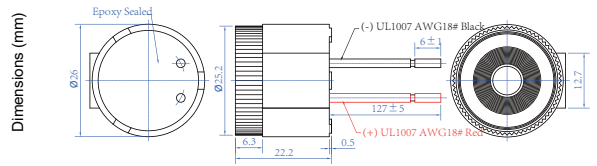
Part Number	CPA26G515CEP	
Tone	Continuous, Extra Loud	
Rated Voltage (VDC)	5-15	
Resonant Frequency (Hz)	2900±250	
SPL @ 61cm (dB)	95±5 @ 5VDC / 105±5 @ 15VDC	
Current (mA)	10 max. @ 5VDC / 30 max. @ 15VDC	
Operating Temperature (°C)	-20~+60	
Storage Temperature (°C)	-30~+100	
Weight (g)	15	



CPA26G515CEW



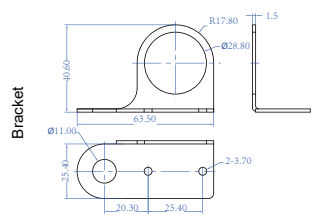
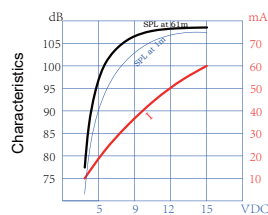
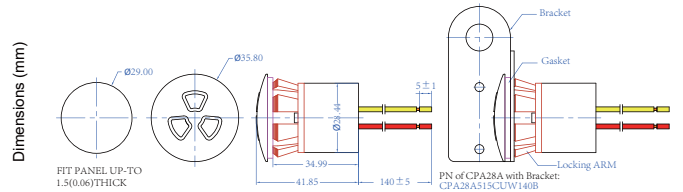
Part Number	CPA26G515CEW127	
Tone	Continuous, Extra Loud	
Rated Voltage (VDC)	5-15	
Resonant Frequency (Hz)	2900±250	
SPL @ 5/15VDC 61cm (dB)	94±5 @ 5VDC / 103±5 @ 15VDC	
Current 5/15VDC (mA)	10 max. @ 5VDC / 40 max. @ 15VDC	
Operating Temperature (°C)	-20~+60	
Storage Temperature (°C)	-30~+100	
Weight (g)	20	



CPA28A515CUW



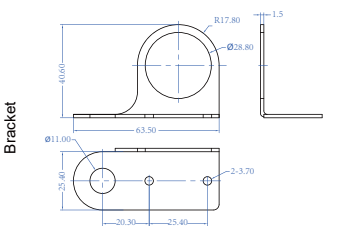
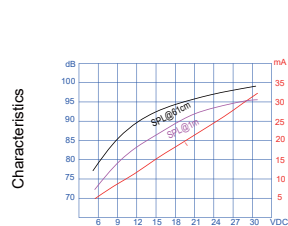
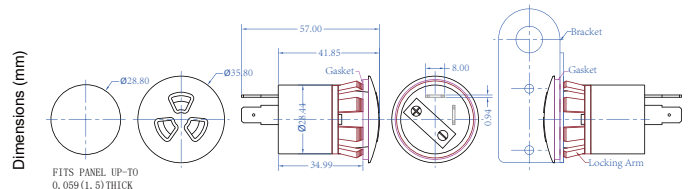
Part Number	CPA28A515CUW140	
Tone	Continuous, Ultra Loud	
Rated Voltage (VDC)	5-15	
Resonant Frequency (Hz)	2400±300	
SPL @ 5/15VDC 61cm (dB)	100±5 @ 5VDC / 108±5 @ 15VDC	
Current 5/15VDC (mA)	25 max. @ 5VDC / 70 max. @ 15VDC	
Operating Temperature (°C)	-30~+65	
Storage Temperature (°C)	-40~+90	
Weight (g)	25 (without bracket)	



CPA28B630HMQ-L



Part Number	CPA28B630HMQ-L	
Tone	Chime, Medium Loud	
Rated Voltage (VDC)	6-30	
Resonant Frequency (Hz)	2900±250	
SPL @ 5/15VDC 61cm (dB)	75±3 @ 6VDC / 95±3 @ 30VDC	
Current 5/15VDC (mA)	10 max. @ 6VDC / 35max. @ 30VDC	
Operating Temperature (°C)	-30~+65	
Storage Temperature (°C)	-40~+90	
Weight (g)	23 (without bracket)	



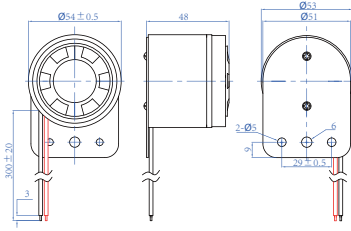
Chinasound Piezo Alarm

CPA54A616SE6W

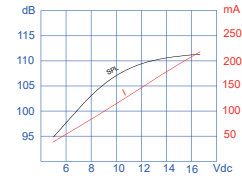


Part Number	CPA54A616SE6W300	
Tone	Siren, Ultra Loud	
Rated Voltage (VDC)	6~16	
Resonant Frequency (Hz)	2000/4000±500	
SPL @ 61cm (dB)	95±5 @ 6VDC / 108±5 @ 16VDC	
Current (mA)	70 max. @ 6VDC / 240 max. @ 16VDC	
Operating Temperature (°C)	-20~+60	
Storage Temperature (°C)	-30~+70	
Weight (g)	80	

Dimensions (mm)



Characteristics

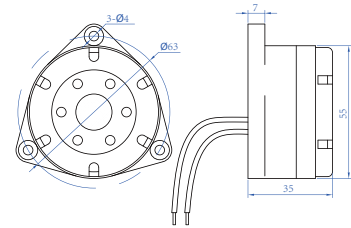


CPA55H615TU6W

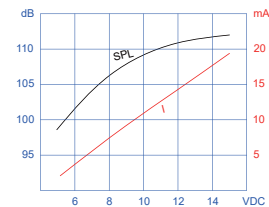


Part Number	CPA55H615TU6W200	
Tone	Intermittent, Ultra Loud	
Rated Voltage (VDC)	5~15	
Resonant Frequency (Hz)	2900±500	
SPL @ 100cm (dB)	100±5 @ 6VDC / 110±5 @ 15VDC	
Current (mA)	10 max. @ 6VDC / 30 max. @ 15VDC	
Operating Temperature (°C)	-20~+60	
Storage Temperature (°C)	-30~+70	
Weight (g)	44	

Dimensions (mm)



Characteristics

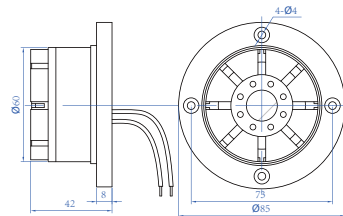


CPA60J515CUW

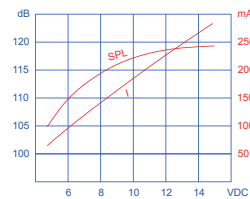


Part Number	CPA60J515CUW200	
Tone	Continuous, Ultra Loud	
Rated Voltage (VDC)	5~15	
Resonant Frequency (Hz)	2900±300	
SPL @ 100cm (dB)	110±5 @ 5VDC / 120±5 @ 15VDC	
Current (mA)	100 max. @ 5VDC / 300 max. @ 15VDC	
Operating Temperature (°C)	-20~+60	
Storage Temperature (°C)	-30~+70	
Weight (g)	48	

Dimensions (mm)



Characteristics

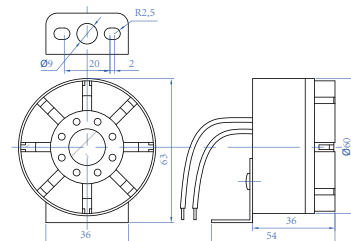


CPA60K515SUW

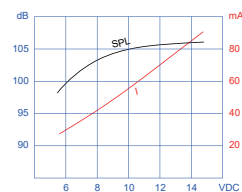


Part Number	CPA60K515SUW200	
Tone	Siren, Ultra Loud	
Rated Voltage (VDC)	5~15	
Resonant Frequency (Hz)	2900±250	
SPL @ 100cm (dB)	95±5 @ 5VDC / 105±5 @ 15VDC	
Current (mA)	30 @ 5VDC / 100 @ 15VDC	
Operating Temperature (°C)	-20~+60	
Storage Temperature (°C)	-30~+70	
Weight (g)	136	

Dimensions (mm)



Characteristics

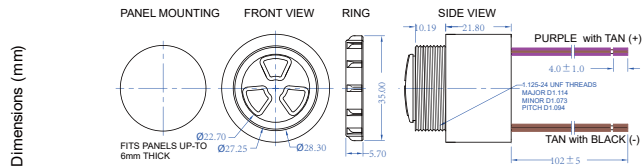


Chinasound Piezo Alarm

CPA36

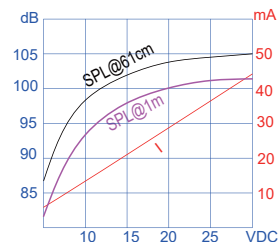


- ◆ RoHS Compliant.
- ◆ Reliable Solid State Piezoelectric Technology.
- ◆ Corrosion Resistant Stainless Steel Diaphragm.
- ◆ EMC/EMI/EMS/RF Compliance.
- ◆ Flame Retardant Plastic.
- ◆ Extended storage temperature.
- ◆ Hermetically Sealed Alarm



Dimensions (mm)

Characteristics



Part Number	CPA36B628TE1W102	
Tone	Intermittent, Extra Loud	
Rated Voltage (VDC)	6~28	
Resonant Frequency (Hz)	2900 ± 250	
SPL @ 61cm (dB)	90 ± 5 @ 6VDC / 103 ± 5 @ 28VDC	
Current (mA)	10 @ 6VDC / 50 @ 28VDC	
Operating Temperature (°C)	-30~+65	
Storage Temperature (°C)	-40~+100	
Weight (g)	40	

Part Number Code

CPA36B628TE1W

C: Chinasound

PA: Piezo Alarm

36: 36mm, Main Dimension

B: B Housing, Housing Type

B & D: 2900Hz, **C & E:** 2100Hz

628: 6 to 28Vdc, Operating Voltage Range

215: 2 to 15Vdc, **948:** 9 to 48Vdc

531: 5 to 31Vac/Vdc, **951:** 9 to 51Vac/Vdc

120: 40 to 120Vac, **220:** 130 to 220Vac

T: Intermittent Tone, Tone Type

C: Continuous Tone

T: Intermittent Tone

W: Warble Tone

H: Chime Tone

S: Siren Tone

W: Wire, Terminal Type

C: Connector

P: Pin

Q: Quick Tab

S: Screw

W: Wire

1: Slow, Intermittent Rate

6: Very Fast, 6 to 10 cycles per second

3: Fast, 3 cycles per second

2: Middle, 2 cycles per second

1: Slow, 1 cycle per second

E: Extra Loud, Sound Output Type

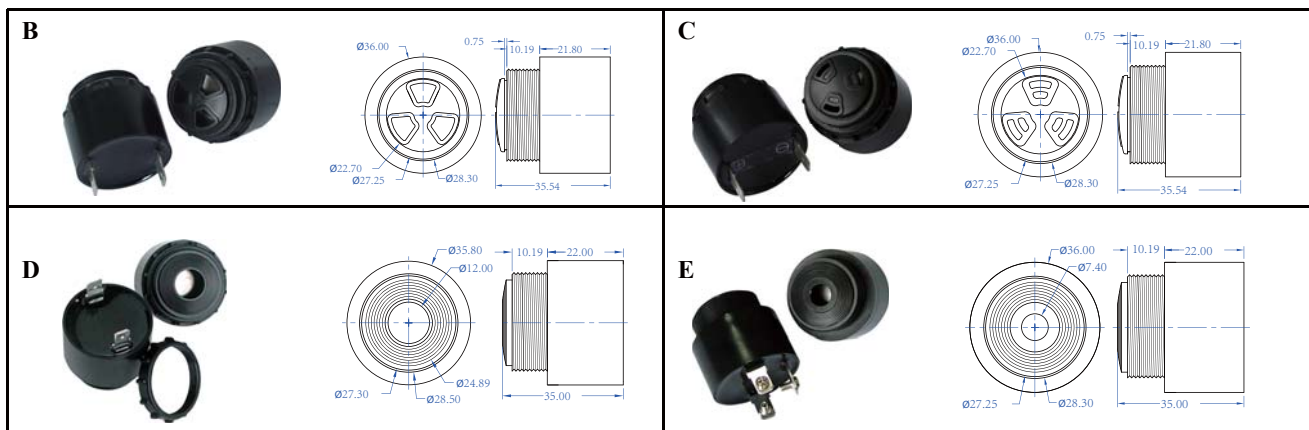
M: Middle Loud, to 98dBA at 2" or 95dBA at 1m

E: Extra Loud, to 103dBA at 2" or 100dBA 1m

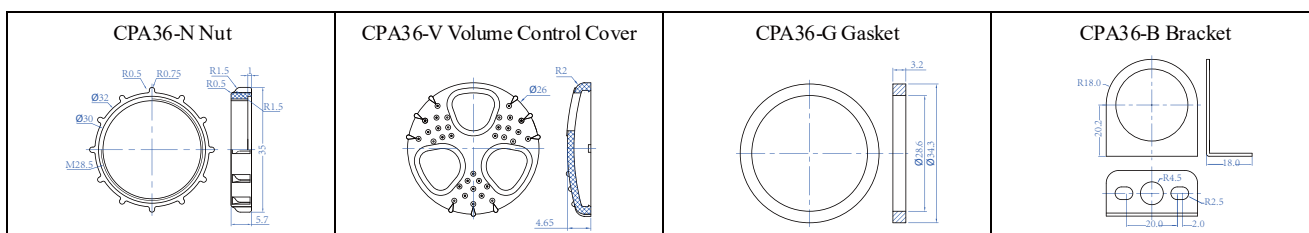
U: Ultra Loud, to 108dBA at 2" or 105dBA 1m

(above Sound Output is for continuous tone type alarm)

Housing Code


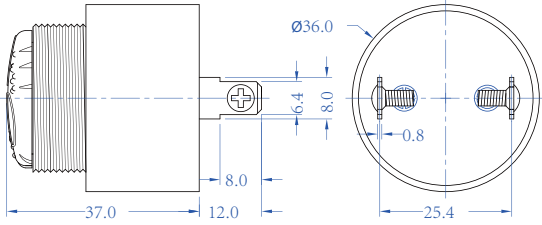

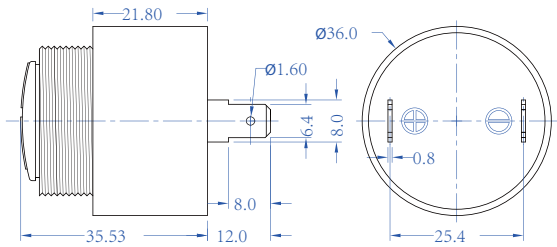

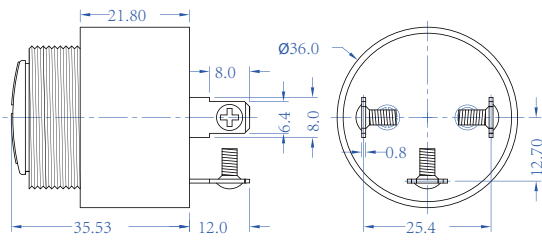

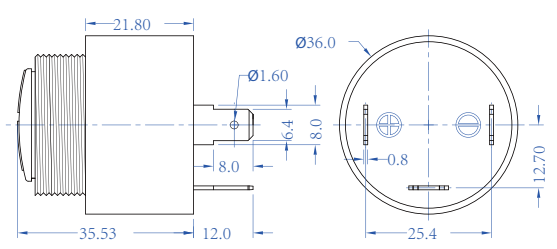

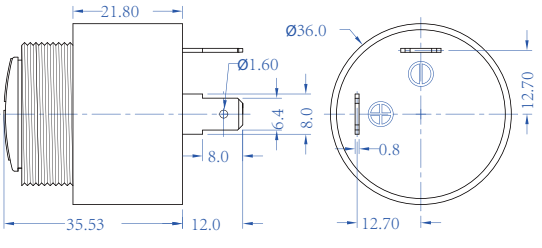

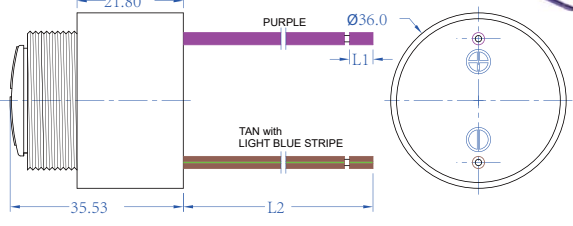

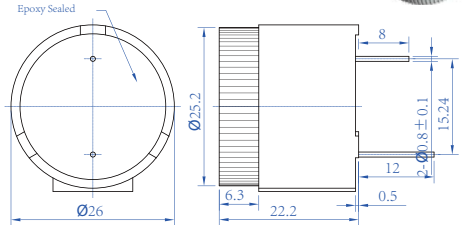
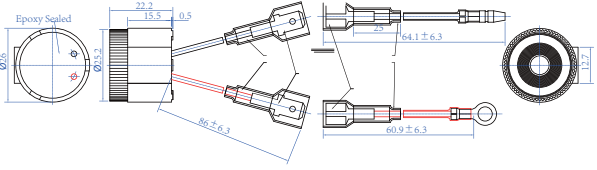
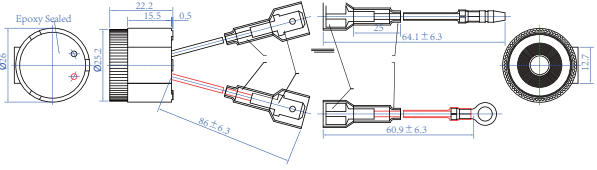


Accessories



Chinasound Piezo Alarm

Terminal Type (other is available)

<p>2 screws and volume control</p>  	<p>2 quick tabs</p>  
<p>3 screws</p>  	<p>3 quick tabs</p>  
<p>2 quick tabs in "L" shape</p>  	<p>2 wires 18 (16X30) AWG, GXL, Automotive Wire wire length L1 or L2 could be specified by customer</p>  
<p>2 pins</p>  	<p>connectors</p>  

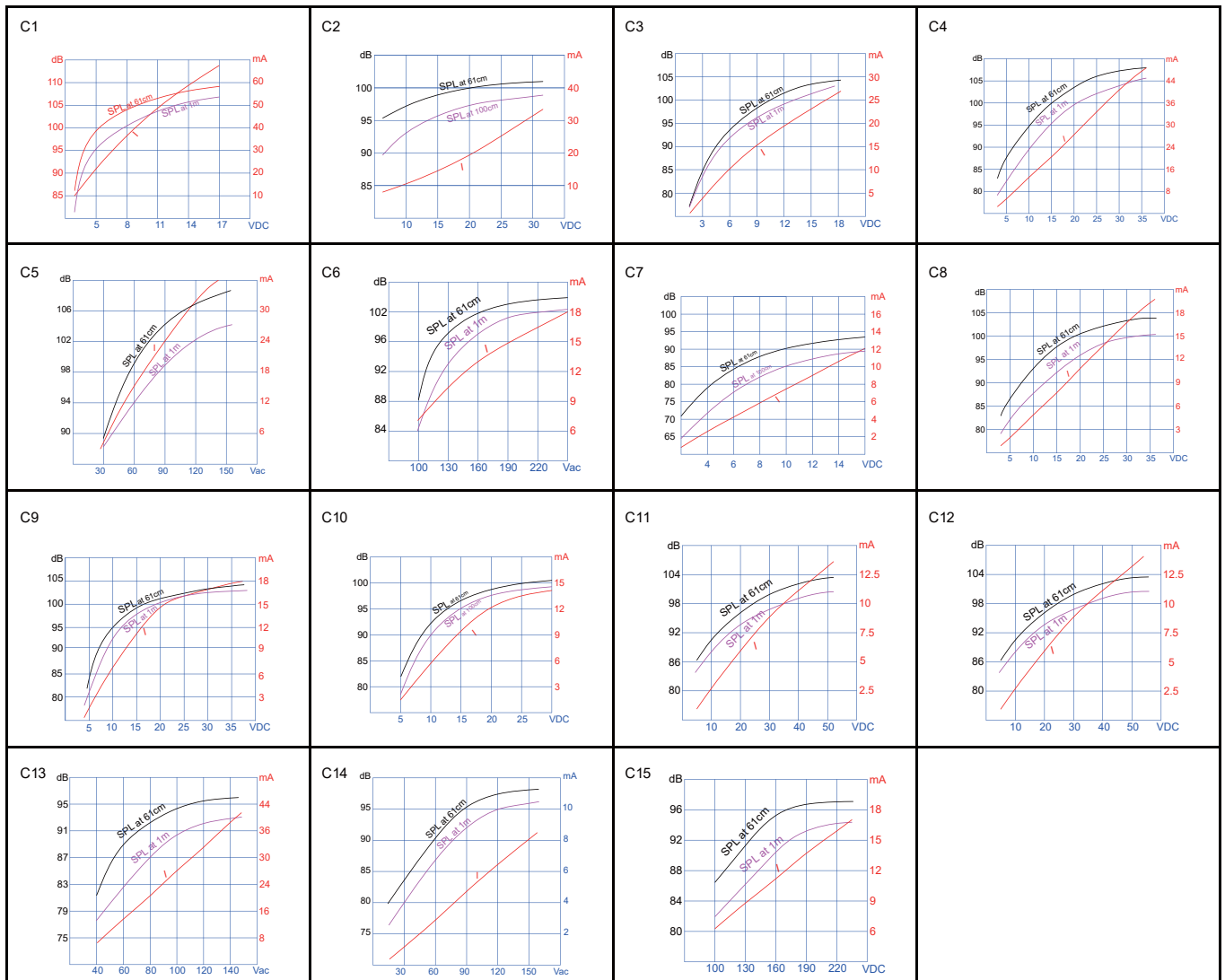
Chinasound Piezo Alarm

Part Number	Housing Type	Operating Voltage		Sound Output Type	Sound Output (dB(A) at 61 / 100cm)		Operating Current (mA)		Rated Frequency (Hz)	Intermittent Rate (cycles per second)	Terminal Type / Length (mm)	Performance Curve
		Min. (V)	Max. (V)		at Min. V	at Max. V	at Min. V	at Max. V				

Continuous Tone

CPA36E515CUQ	E	5	15	Ultra Loud	100 / 95	108 / 105	30	70	2100	-	Q	C1
CPA36E628CUQ	E	6	28	Ultra Loud	95 / 90	108 / 98	20	50	2100	-	Q	C2
CPA36BV215CES	B+V	2	15	Extra Loud	75 / 72	103 / 98	5	25	2900	-	S	C3
CPA36B330CEQ	B	3	30	Extra Loud	83 / 78	108 / 98	5	45	2900	-	Q	C4
CPA36B120CEQ	B	**40	**120	Extra Loud	90 / 85	105 / 102	10	45	2900	-	Q	C5
CPA36BV220CEQ	B+V	**130	**220	Extra Loud	97 / 93	103 / 100	12	20	2900	-	Q	C6
CPA36B216CMQ	B	2	16	Medium Loud	70 / 64	93 / 89	2	15	2900	-	Q	C7
CPA36B230CMS	B	2	30	Medium Loud	83 / 78	103 / 100	3	20	2900	-	S	C8
CPA36B530CMS	B	5	30	Medium Loud	85 / 80	103 / 100	5	20	2900	-	S	C9
CPA36B531CMS	B	*5	*31	Medium Loud	85 / 80	103 / 98	5	20	2900	-	S	C10
CPA36B948CMQ	B	9	48	Medium Loud	85 / 82	103 / 100	3	15	2900	-	Q	C11
CPA36B951CMQ	B	*9	*51	Medium Loud	85 / 82	103 / 100	3	15	2900	-	Q	C12
CPA36B120CEQ	B	**40	**120	Extra Loud	80 / 76	96 / 92	10	45	2900	-	Q	C13
CPA36B121CMQ	B	*30	*121	Medium Loud	83 / 79	98 / 95	3	15	2900	-	Q	C14
CPA36B220CMS	B	**130	**220	Medium Loud	86 / 82	98 / 94	10	20	2900	-	S	C15

Typical Performance Curve (Sound Output & Current Consumption vs. Voltage)



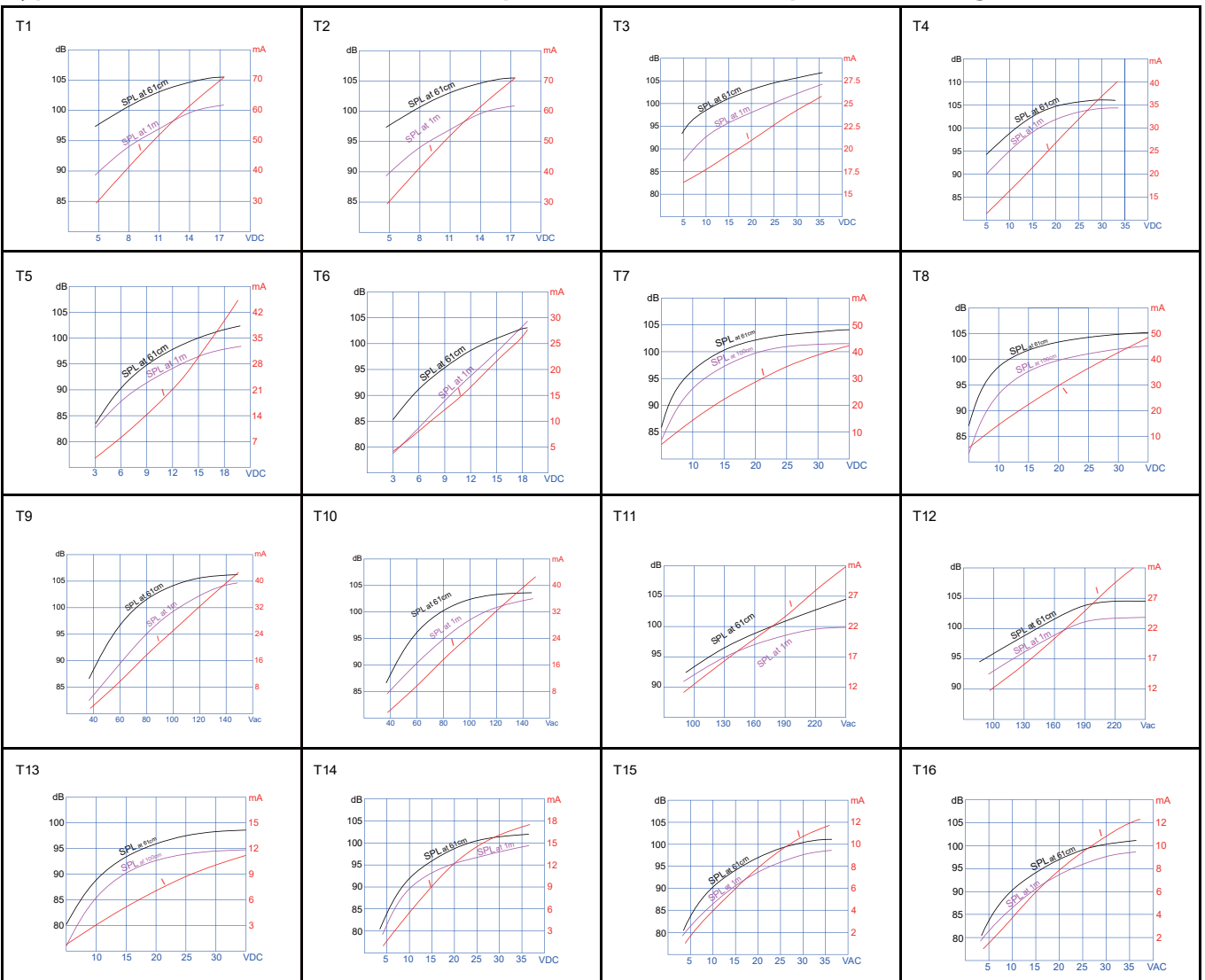
Chinasound Piezo Alarm

Part Number	Housing Type	Operating Voltage * AC/DC Non-Polar ** AC Only All Others DC Only		Sound Output Type	Sound Output (dB(A) at 61 / 100cm)		Operating Current (mA)		Rated Frequency (Hz)	Intermittent Rate (cycles per second)	Terminal Type / Length (mm)	Performance Curve
		Min. (V)	Max. (V)		at Min. V	at Max. V	at Min. V	at Max. V				

Intermittent Tone

CPA36E515TU3Q	E	5	15	Ultra Loud	97 / 90	105 / 100	30	70	2100	3	Q	T1
CPA36E515TU1Q	E	5	15	Ultra Loud	97 / 90	105 / 100	30	70	2100	1	Q	T2
CPA36E628TU3S	E	6	28	Ultra Loud	95 / 90	105 / 102	20	30	2100	3	S	T3
CPA36E628TU1S	E	6	28	Ultra Loud	95 / 90	105 / 102	20	40	2100	1	S	T4
CPA36B515TE3Q	B	5	15	Extra Loud	90 / 86	100 / 96	10	30	2900	3	Q	T5
CPA36B515TE1Q	B	5	15	Extra Loud	90 / 86	100 / 96	10	35	2900	1	Q	T6
CPA36B628TE3Q	B	6	28	Extra Loud	90 / 86	105 / 102	10	50	2900	3	Q	T7
CPA36B628TE1Q	B	6	28	Extra Loud	90 / 86	105 / 102	10	50	2900	1	Q	T8
CPA36B120TE3S	B	**40	**120	Extra Loud	88 / 83	105 / 102	5	40	2900	3	S	T9
CPA36B120TE1S	B	**40	**120	Extra Loud	88 / 83	105 / 102	5	40	2900	1	S	T10
CPA36B220TE3Q	B	**130	**220	Extra Loud	97 / 95	105 / 102	20	30	2900	3	Q	T11
CPA36B220TE1S	B	**130	**220	Extra Loud	97 / 95	105 / 102	20	30	2900	1	S	T12
CPA36B530TM3S	B	5	30	Medium Loud	80 / 76	98 / 94	3	15	2900	3	S	T13
CPA36B530TM1Q	B	5	30	Medium Loud	84 / 82	102 / 98	3	20	2900	1	Q	T14
CPA36B531TM3Q	B	*5	*31	Medium Loud	84 / 82	100 / 97	3	15	2900	3	Q	T15
CPA36B531TM1Q	B	*5	*31	Medium Loud	84 / 82	100 / 97	3	15	2900	1	Q	T16

Typical Performance Curve (Sound Output & Current Consumption vs. Voltage)



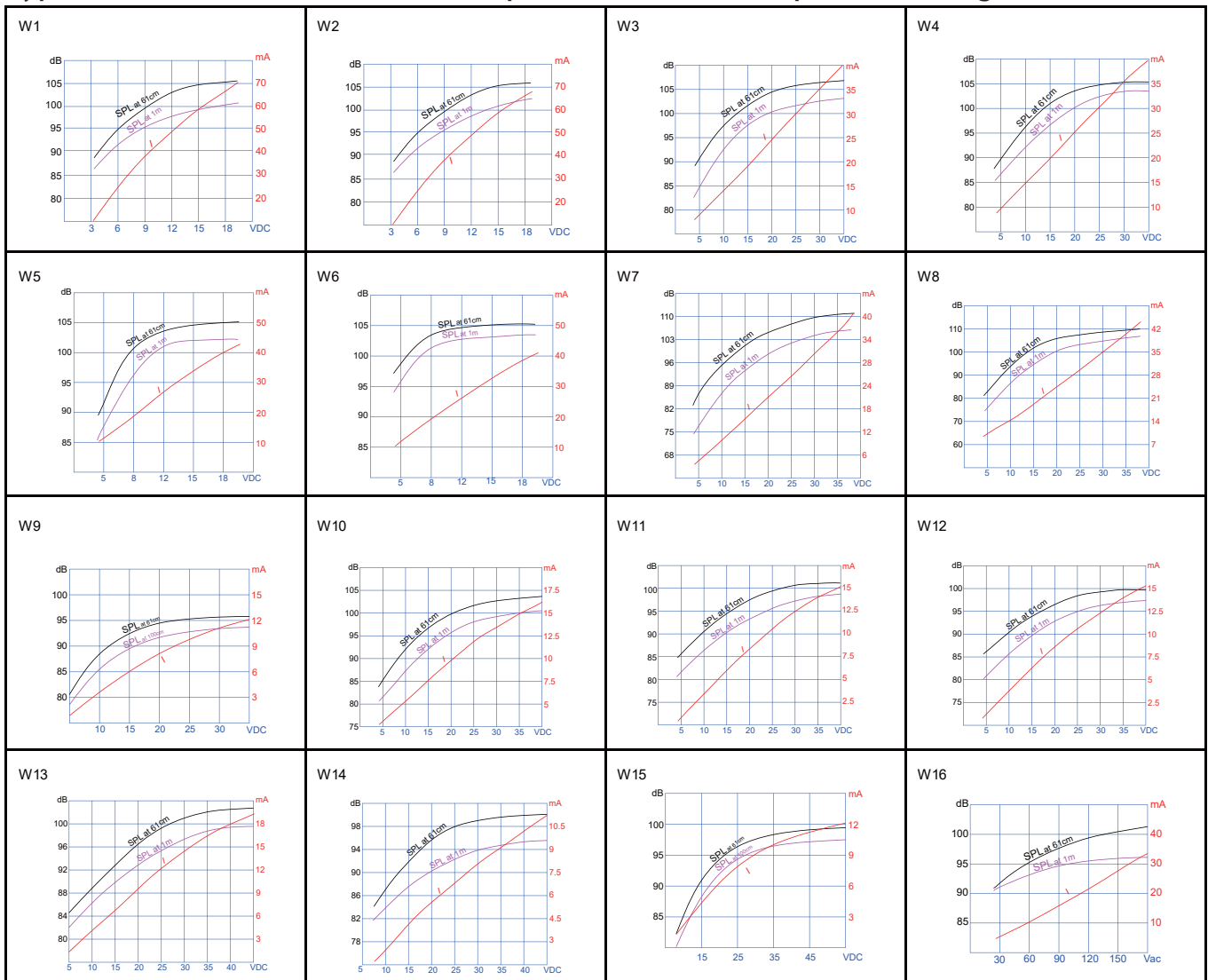
Chinasound Piezo Alarm

Part Number	Housing Type	Operating Voltage		Sound Output Type	Sound Output (dB(A) at 61 / 100cm)		Operating Current (mA)		Rated Frequency (Hz)	Intermittent Rate (cycles per second)	Terminal Type / Length (mm)	Performance Curve
		Min. (V)	Max. (V)		at Min. V	at Max. V	at Min. V	at Max. V				

Warble Tone

CPA36E515WU3Q	E	5	15	Ultra Loud	95 / 90	105 / 100	30	70	2100	3	Q	W1
CPA36E515WU1Q	E	5	15	Ultra Loud	95 / 90	105 / 100	30	70	2100	1	Q	W2
CPA36E628WU3Q	E	6	28	Ultra Loud	92 / 87	105 / 100	30	70	2100	3	S	W3
CPA36E628WU1Q	E	6	28	Ultra Loud	92 / 87	105 / 100	30	70	2100	1	S	W4
CPA36B515WE3Q	B	5	15	Extra Loud	92 / 87	105 / 100	15	40	2900	3	Q	W5
CPA36B515WE1Q	B	5	15	Extra Loud	92 / 87	105 / 100	15	40	2900	1	Q	W6
CPA36B628WE3Q	B	6	28	Extra Loud	90 / 80	105 / 100	15	40	2900	3	Q	W7
CPA36B628WE1Q	B	6	28	Extra Loud	90 / 80	105 / 100	15	40	2900	1	Q	W8
CPA36B530WM3Q	B	5	30	Medium Loud	87 / 80	100 / 95	3	15	2900	3	S	W9
CPA36B530WM1Q	B	5	30	Medium Loud	87 / 80	100 / 95	3	15	2900	1	S	W10
CPA36B531WM3Q	B	*5	*31	Medium Loud	85 / 80	100 / 95	3	15	2900	3	Q	W11
CPA36B531WM6Q	B	*5	*31	Medium Loud	85 / 80	100 / 95	3	15	2900	6	S	W12
CPA36B948WM3Q	B	9	48	Medium Loud	87 / 85	105 / 100	3	20	2900	3	S	W13
CPA36B948WM1Q	B	9	48	Medium Loud	84 / 82	102 / 98	3	15	2900	1	Q	W14
CPA36B951WM6Q	B	*9	*51	Medium Loud	82 / 80	100 / 95	3	15	2900	6	Q	W15
CPA36B120WM6Q	B	**40	**120	Medium Loud	93 / 90	100 / 95	10	30	2900	6	Q	W16

Typical Performance Curve (Sound Output & Current Consumption vs. Voltage)



Chinasound Piezo Alarm

Part Number	Housing Type	Operating Voltage * AC/DC Non-Polar ** AC Only All Others DC Only		Sound Output Type	Sound Output (dB(A) at 61 / 100cm)		Operating Current (mA)		Rated Frequency (Hz)	Intermittent Rate (cycles per second)	Terminal Type / Length (mm)	Performance Curve
		Min. (V)	Max. (V)		at Min. V	at Max. V	at Min. V	at Max. V				

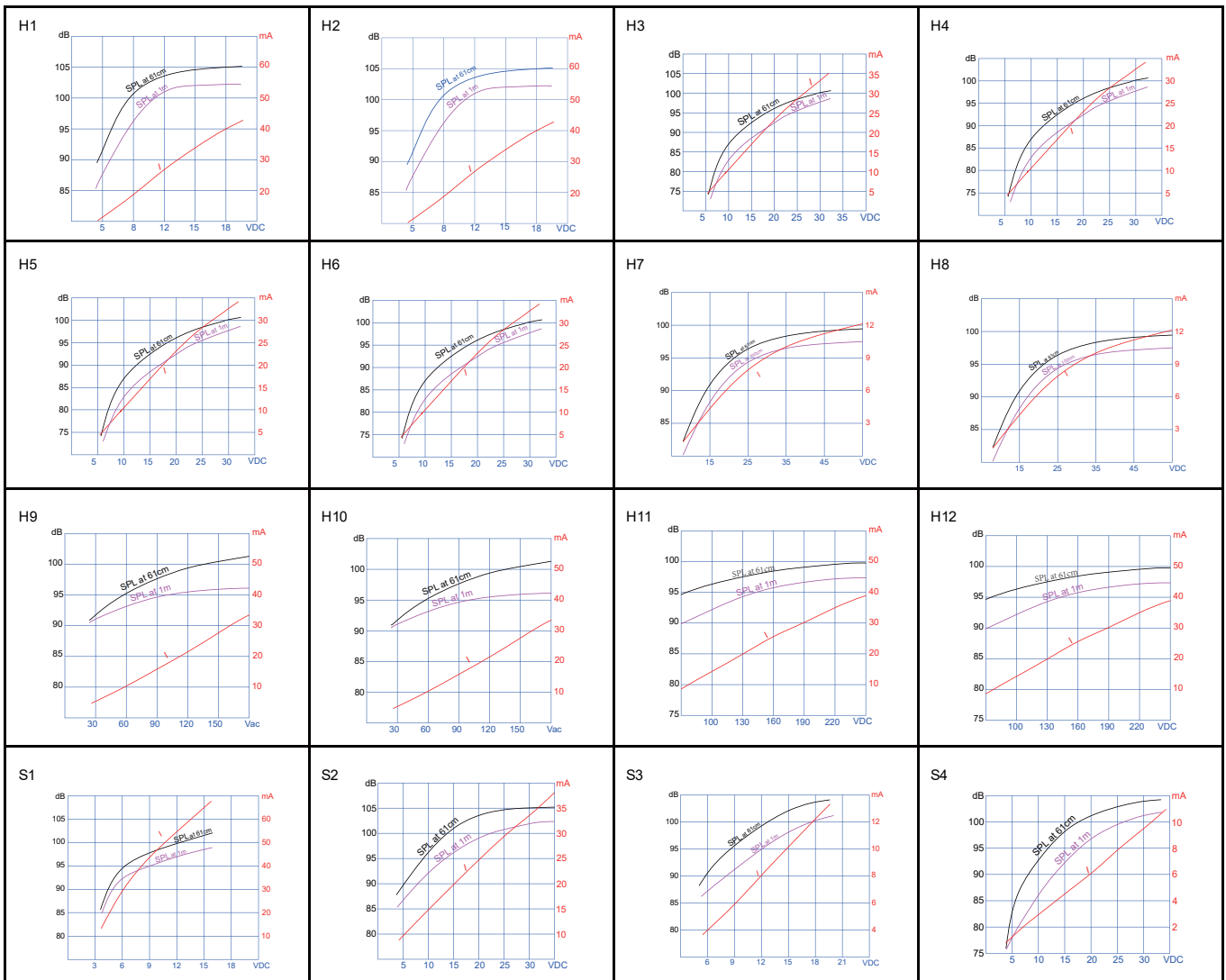
Chime Tone

CPA36B515HE2Q	B	5	15	Extra Loud	92 / 87	105 / 100	10	40	2900	2	Q	H1
CPA36B515HE1Q	B	5	15	Extra Loud	92 / 87	105 / 100	10	40	2900	1	Q	H2
CPA36B630HM2Q	B	6	30	Medium Loud	75 / 72	100 / 97	5	35	2900	2	Q	H3
CPA36B630HM1Q	B	6	30	Medium Loud	75 / 72	100 / 97	5	35	2900	1	Q	H4
CPA36B631HM2Q	B	*6	*31	Medium Loud	75 / 72	100 / 97	5	35	2900	2	Q	H5
CPA36B631HM1Q	B	*6	*31	Medium Loud	75 / 72	100 / 97	5	35	2900	1	Q	H6
CPA36B951HM2Q	B	*9	*51	Medium Loud	82 / 80	100 / 97	3	20	2900	2	Q	H7
CPA36B951HM1Q	B	*9	*51	Medium Loud	82 / 80	100 / 97	3	20	2900	1	Q	H8
CPA36B120HM3Q	B	**40	**120	Medium Loud	93 / 90	100 / 95	10	30	2900	3	Q	H9
CPA36B120HM1Q	B	**40	**120	Medium Loud	93 / 90	100 / 95	10	30	2900	1	Q	H10
CPA36B220HM3Q	B	**130	**220	Medium Loud	97 / 93	100 / 95	20	40	2900	3	Q	H11
CPA36B220HM1Q	B	**130	**220	Medium Loud	97 / 93	100 / 95	20	40	2900	1	Q	H12

Siren Tone

CPA36E515SUB6Q	E	5	15	Ultra Loud	93 / 90	103 / 98	30	60	2100	6	Q	S1
CPA36E628SUB6Q	E	6	28	Ultra Loud	90 / 87	103 / 98	10	50	2100	6	Q	S2
CPA36E515SEB6Q	E	5	15	Extra Loud	88 / 86	103 / 98	5	15	2100	6	Q	S3
CPA36E628SEB6Q	E	6	28	Extra Loud	85 / 80	105 / 102	5	15	2100	6	Q	S4

Typical Performance Curve (Sound Output & Current Consumption vs. Voltage)



Chinasound Piezo Alarm

Part Number	Housing Type	Operating Voltage * AC/DC Non-Polar ** AC Only All Others DC Only		Sound Output Type	Sound Output (dB(A) at 61 / 100cm)		Operating Current (mA)		Rated Frequency (Hz)	Intermittent Rate (cycles per second)	Terminal Type / Length (mm)	Performance Curve
		Min. (V)	Max. (V)		at Min. V	at Max. V	at Min. V	at Max. V				

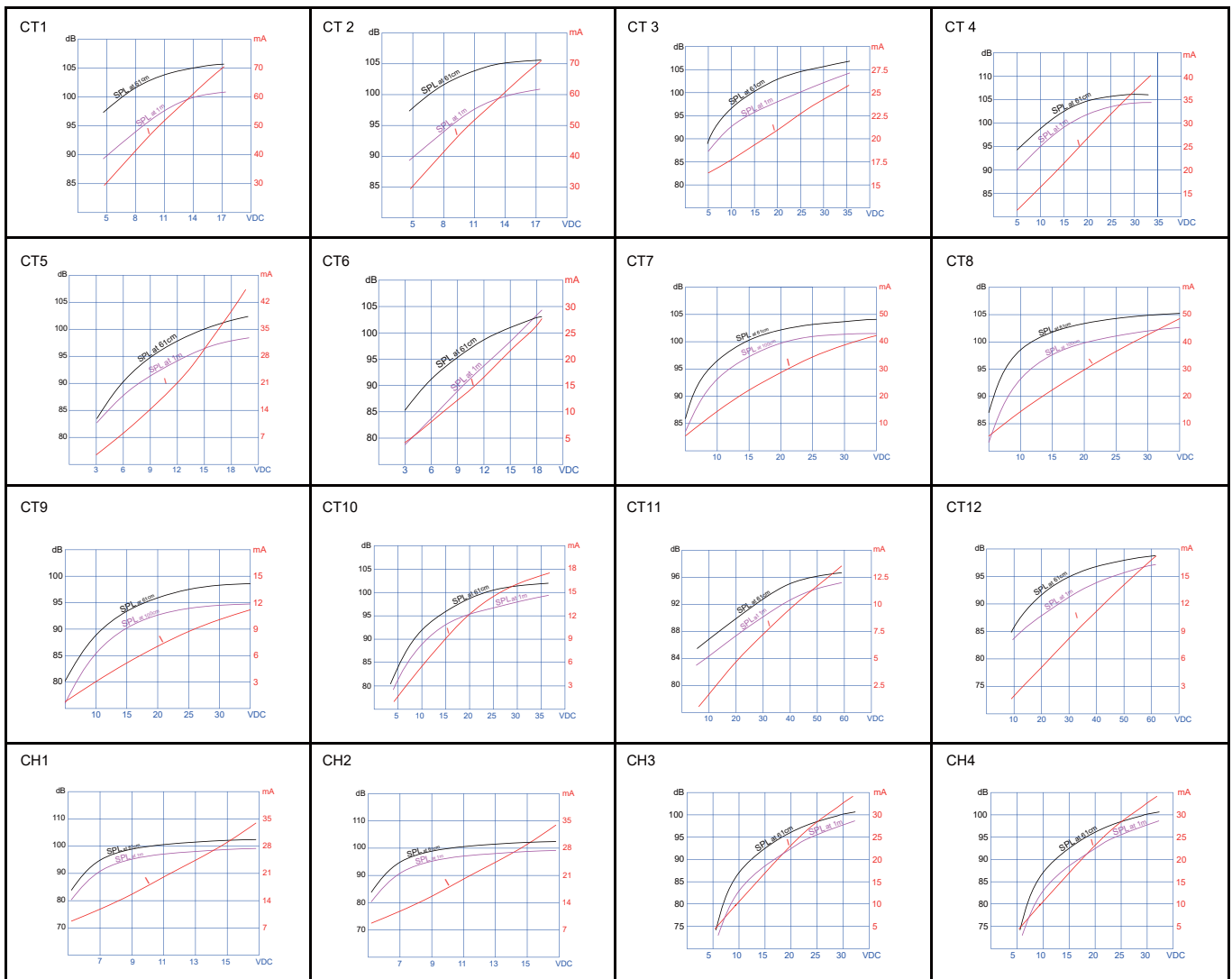
Dual Function: Continuous / Intermittent Tones

CPA36E515CTU3Q	E	5	15	Ultra Loud	97 / 90	105 / 100	30	70	2100	3	Q	CT1
CPA36E515CTU1Q	E	5	15	Ultra Loud	97 / 90	105 / 100	30	70	2100	1	Q	CT2
CPA36E628CTU3Q	E	6	28	Ultra Loud	95 / 90	105 / 100	20	40	2100	3	Q	CT3
CPA36E628CTU1Q	E	6	28	Ultra Loud	95 / 90	105 / 100	20	40	2100	1	Q	CT4
CPA36B515CTE3Q	B	5	15	Extra Loud	90 / 85	103 / 97	15	40	2900	3	Q	CT5
CPA36B515CTE1Q	B	5	15	Extra Loud	90 / 85	103 / 97	15	40	2900	1	Q	CT6
CPA36B630CTE3Q	B	6	30	Extra Loud	85 / 83	105 / 100	15	50	2900	3	Q	CT7
CPA36B630CTE1Q	B	6	30	Extra Loud	85 / 83	105 / 100	15	50	2900	1	Q	CT8
CPA36B530CTM3Q	B	5	30	Medium Loud	80 / 76	100 / 95	2	20	2900	3	Q	CT9
CPA36B530CTM1Q	B	5	30	Medium Loud	80 / 76	100 / 95	2	20	2900	1	Q	CT10
CPA36B948CTM3Q	B	9	48	Medium Loud	85 / 83	100 / 95	2	20	2900	3	Q	CT11
CPA36B948CTM1Q	B	9	48	Medium Loud	85 / 83	100 / 95	2	20	2900	1	Q	CT12

Dual Function: Continuous / Chime Tones

CPA36B615CHE2Q	B	6	15	Extra Loud	90 / 85	103 / 97	10	35	2900	2	Q	CH1
CPA36B615CHE1Q	B	6	15	Extra Loud	90 / 85	103 / 97	10	35	2900	1	Q	CH2
CPA36B630CHM2Q	B	6	30	Medium Loud	75 / 70	100 / 97	5	30	2900	2	Q	CH3
CPA36B630CHM1Q	B	6	30	Medium Loud	75 / 70	100 / 97	5	30	2900	1	Q	CH4

Typical Performance Curve (Sound Output & Current Consumption vs. Voltage)



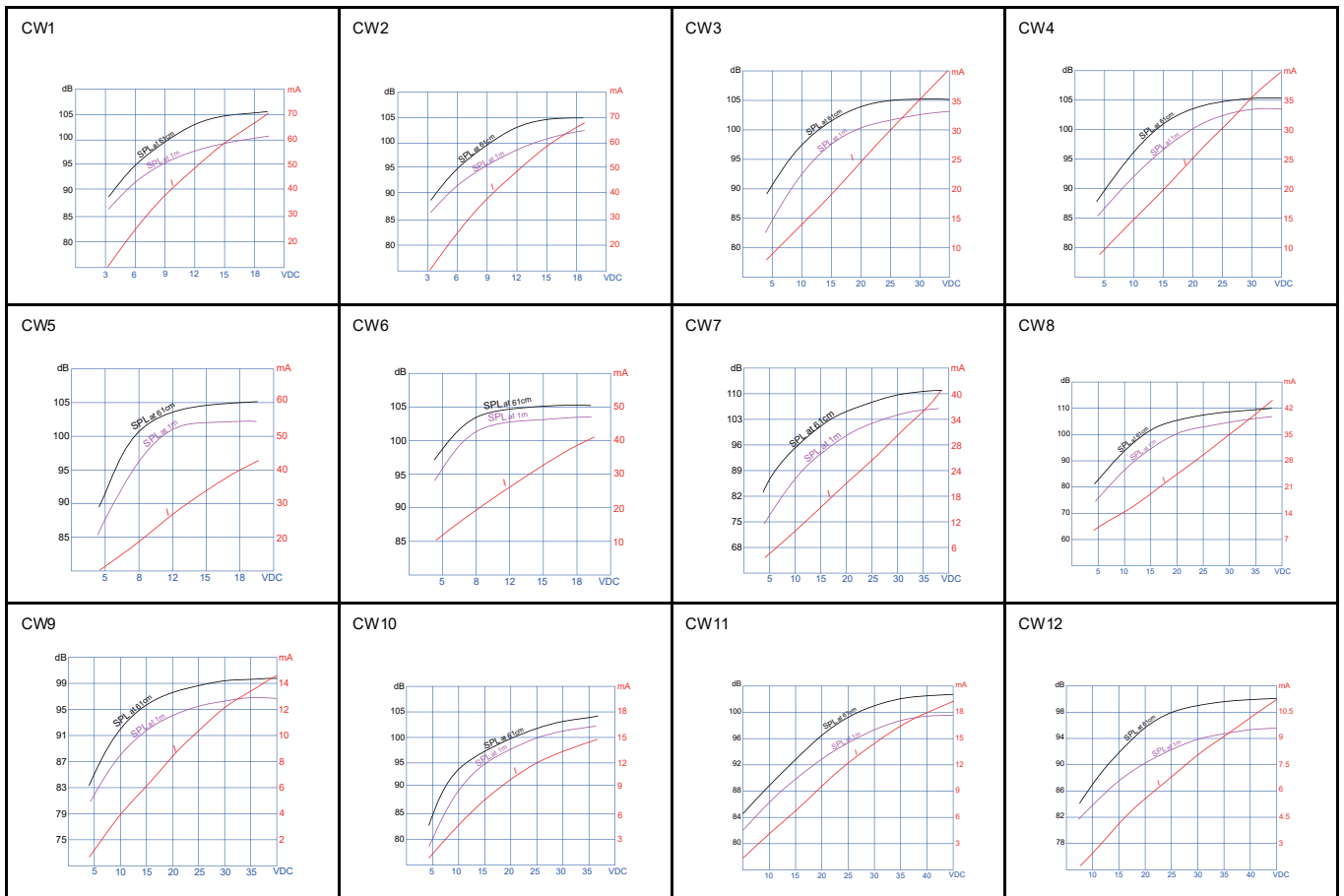
Chinasound Piezo Alarm

Part Number	Housing Type	Operating Voltage		Sound Output Type	Sound Output (dB(A) at 61/100cm)		Operating Current (mA)		Rated Frequency (Hz)	Intermittent Rate (cycles per second)	Terminal Type / Length (mm)	Performance Curve
		Min. (V)	Max. (V)		at Min. V	at Max. V	at Min. V	at Max. V				
CPA36E515CWU3Q	E	5	15	Ultra Loud	95 / 90	105 / 100	30	70	2100	3	Q	CW1
CPA36E515CWU1Q	E	5	15	Ultra Loud	95 / 90	105 / 100	30	70	2100	1	Q	CW2
CPA36E628CWU3Q	E	6	28	Ultra Loud	90 / 85	105 / 102	20	40	2100	3	Q	CW3
CPA36E628CWU1Q	E	6	28	Ultra Loud	90 / 85	105 / 102	20	40	2100	1	Q	CW4
CPA36B515CWE3Q	B	5	15	Extra Loud	98 / 85	105 / 100	15	40	2900	3	Q	CW5
CPA36B515CWE1Q	B	5	15	Extra Loud	98 / 85	105 / 100	15	40	2900	1	Q	CW6
CPA36B630CWE3Q	B	6	30	Extra Loud	85 / 75	110 / 103	15	40	2900	3	Q	CW7
CPA36B630CWE1Q	B	6	30	Extra Loud	85 / 75	110 / 103	15	40	2900	1	Q	CW8
CPA36B530CWM3Q	B	5	30	Medium Loud	85 / 80	100 / 98	2	20	2900	3	Q	CW9
CPA36B530CWM1Q	B	5	30	Medium Loud	85 / 80	100 / 98	2	20	2900	1	Q	CW0
CPA36B948CWM3Q	B	9	48	Medium Loud	85 / 80	100 / 95	2	20	2900	3	Q	CW11
CPA36B948CWM1Q	B	9	48	Medium Loud	85 / 80	100 / 95	2	20	2900	1	Q	CW12

Dual Function: Continuous / Warble Tones

CPA36E515CWU3Q	E	5	15	Ultra Loud	95 / 90	105 / 100	30	70	2100	3	Q	CW1
CPA36E515CWU1Q	E	5	15	Ultra Loud	95 / 90	105 / 100	30	70	2100	1	Q	CW2
CPA36E628CWU3Q	E	6	28	Ultra Loud	90 / 85	105 / 102	20	40	2100	3	Q	CW3
CPA36E628CWU1Q	E	6	28	Ultra Loud	90 / 85	105 / 102	20	40	2100	1	Q	CW4
CPA36B515CWE3Q	B	5	15	Extra Loud	98 / 85	105 / 100	15	40	2900	3	Q	CW5
CPA36B515CWE1Q	B	5	15	Extra Loud	98 / 85	105 / 100	15	40	2900	1	Q	CW6
CPA36B630CWE3Q	B	6	30	Extra Loud	85 / 75	110 / 103	15	40	2900	3	Q	CW7
CPA36B630CWE1Q	B	6	30	Extra Loud	85 / 75	110 / 103	15	40	2900	1	Q	CW8
CPA36B530CWM3Q	B	5	30	Medium Loud	85 / 80	100 / 98	2	20	2900	3	Q	CW9
CPA36B530CWM1Q	B	5	30	Medium Loud	85 / 80	100 / 98	2	20	2900	1	Q	CW0
CPA36B948CWM3Q	B	9	48	Medium Loud	85 / 80	100 / 95	2	20	2900	3	Q	CW11
CPA36B948CWM1Q	B	9	48	Medium Loud	85 / 80	100 / 95	2	20	2900	1	Q	CW12

Typical Performance Curve (Sound Output & Current Consumption vs. Voltage)



CPA36 is available made as per customer's requirement on voltage, tone and terminal type. An optional mechanical volume control cover CPA36-V installed by customer on all CPA36B housing. To rotate the cover by adjusting the sound hole size can adjust from 0 to about 20dB lower from the maximum sound.