

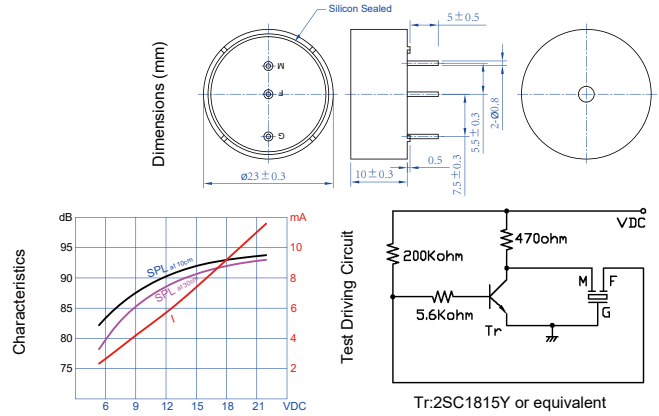
Chinasound Piezo Transducer with Feedback

CPF23E



Part Number	CPF23E09-3.0R	
*Rated Voltage	(VDC)	9
Operating Voltage	(VDC)	6~15
◆Rated Current	(mA)	10 max.
◆Sound Output at 10cm	(dB)	85 min.
Resonant Frequency	(Hz)	3000
Operating Temperature	(°C)	-40~+85
Storage Temperature	(°C)	-40~+90
Weight	(g)	3.4

*Other Rated Voltage is available ◆Value applying at rated voltage

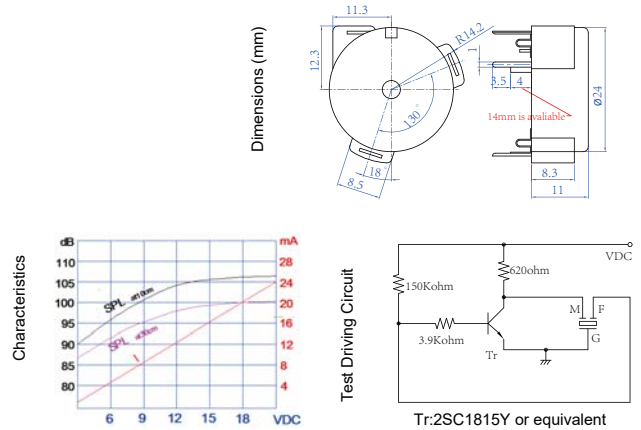


CPF24Z



Part Number	CPF24Z12-3.8R	
*Rated Voltage	(VDC)	12
Operating Voltage	(VDC)	3~25
◆Rated Current	(mA)	12 max.
◆Sound Output at 30cm	(dB)	90 min.
Resonant Frequency	(Hz)	3800
Operating Temperature	(°C)	-40~+85
Storage Temperature	(°C)	-40~+90
Weight	(g)	3.3

*Other Rated Voltage is available ◆Value applying at rated voltage

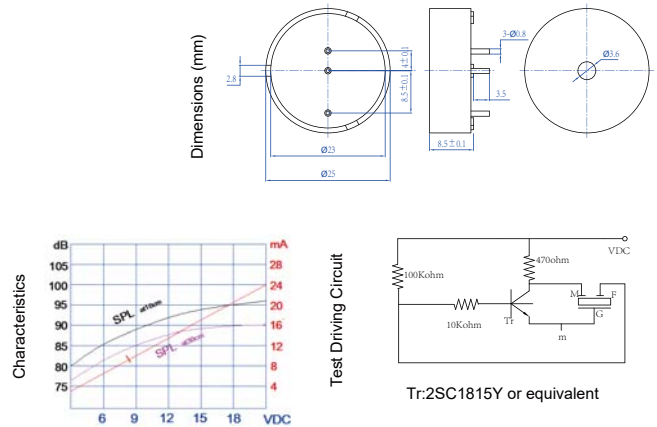


CPF25B



Part Number	CPF25BM12-3.5R	
*Rated Voltage	(VDC)	12
Operating Voltage	(VDC)	3~20
◆Rated Current	(mA)	20 max.
◆Sound Output at 10cm	(dB)	90±5
Resonant Frequency	(Hz)	3500
Operating Temperature	(°C)	-30~+85
Storage Temperature	(°C)	-40~+90
Weight	(g)	2.6

*Other Rated Voltage is available ◆Value applying at rated voltage

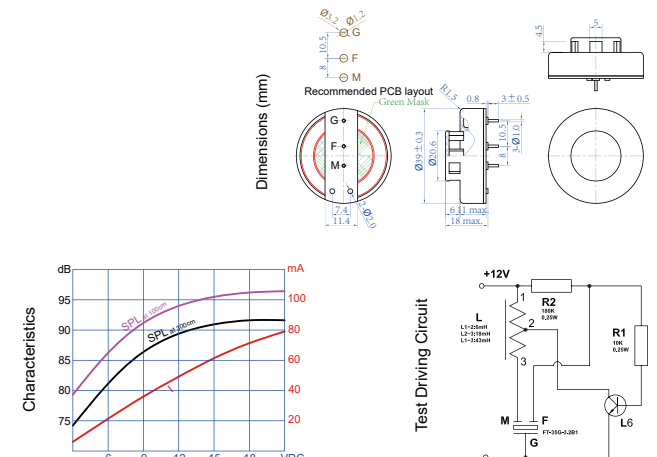


CPF39B



Part Number	CPF39B12-3.2R	
*Rated Voltage	(VDC)	12
Operating Voltage	(VDC)	6~20
◆Rated Current	(mA)	60 max.
◆Sound Output at 300cm	(dB)	85 min.
Resonant Frequency	(Hz)	3200
Operating Temperature	(°C)	-40~+85
Storage Temperature	(°C)	-40~+90
Weight	(g)	8.6

*Other Rated Voltage is available ◆Value applying at rated voltage



Chinasound Piezo Transducer with Feedback

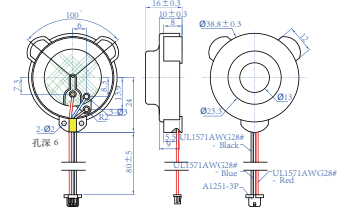
CPF39C



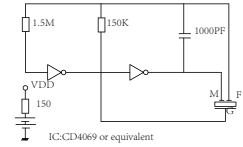
Part Number	CPF39C09-3.2-C26W80R	
*Rated Voltage	(VDC)	9
Operating Voltage	(VDC)	7~15
◆Rated Current	(mA)	60 max.
◆Sound Output at 300cm	(dB)	90 min.
Resonant Frequency	(Hz)	3200
Operating Temperature	(°C)	-40~+85
Storage Temperature	(°C)	-40~+90
Weight	(g)	7.5

*Other Rated Voltage is available ◆Value applying at rated voltage

Dimensions (mm)



Test Driving Circuit



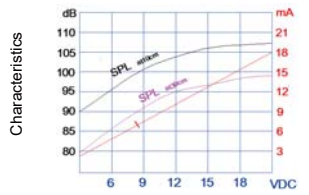
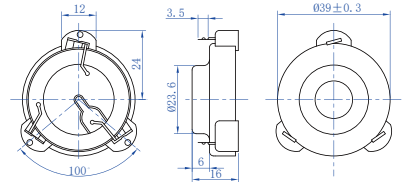
CPF39Y



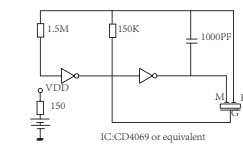
Part Number	CPF39Y12-3.2-SA3.5R	
*Rated Voltage	(VDC)	12
Operating Voltage	(VDC)	6~20
◆Rated Current	(mA)	15 max.
◆Sound Output at 10cm	(dB)	100 min.
Resonant Frequency	(Hz)	3200
Operating Temperature	(°C)	-40~+85
Storage Temperature	(°C)	-40~+90
Weight	(g)	9

*Other Rated Voltage is available ◆Value applying at rated voltage

Dimensions (mm)



Test Driving Circuit



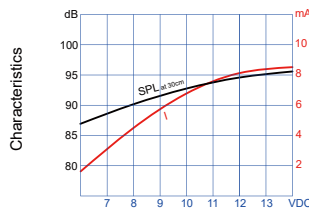
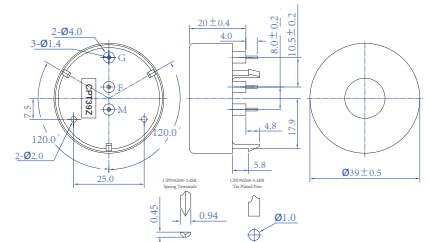
CPF39Z



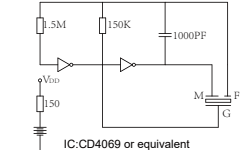
Part Number	CPF39Z09-3.4SR	
*Rated Voltage	(VDC)	9
Operating Voltage	(VDC)	6~15
◆Rated Current	(mA)	20 max.
◆Sound Output at 30cm	(dB)	95 min.
Resonant Frequency	(Hz)	3400
Operating Temperature	(°C)	-20~+70
Storage Temperature	(°C)	-30~+80
Weight	(g)	14

*Other Rated Voltage is available ◆Value applying at rated voltage

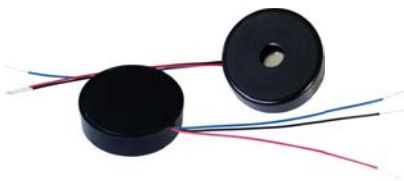
Dimensions (mm)



Test Driving Circuit



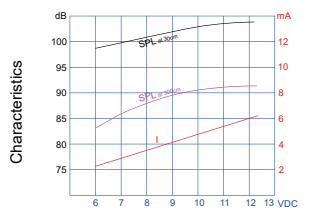
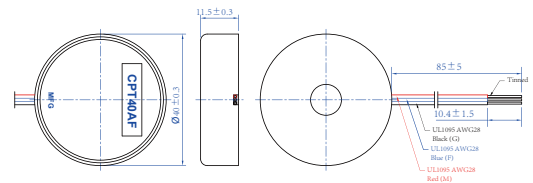
CPF40A



Part Number	CPF40A09-3.6-W85R	
*Rated Voltage	(VDC)	9
Operating Voltage	(VDC)	7~12
◆Rated Current	(mA)	10 max.
◆Sound Output at 300cm	(dB)	85 min.
Resonant Frequency	(Hz)	3600
Operating Temperature	(°C)	-20~+70
Storage Temperature	(°C)	-30~+80
Weight	(g)	10

*Other Rated Voltage is available ◆Value applying at rated voltage

Dimensions (mm)



Test Driving Circuit

